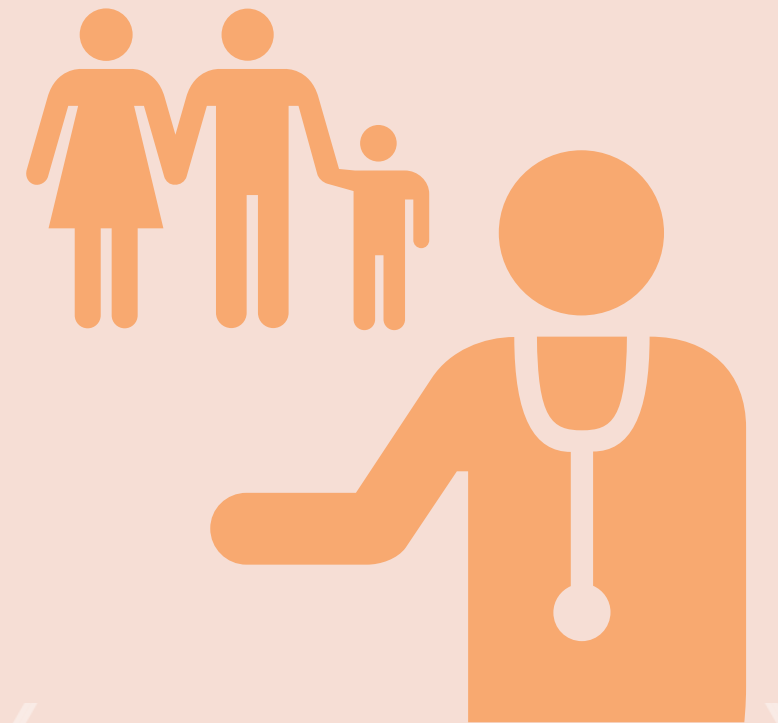


# Characteristics of Children Receiving Concurrent Hospice Care

Lindley, L.C., Cozad, M.J., Ssynarenko, R., Keim-Malpass, J., & Mack, J.W. (2021). A national profile of children receiving pediatric concurrent hospice care, 2011 to 2013. *Journal of Hospice and Palliative Nursing*

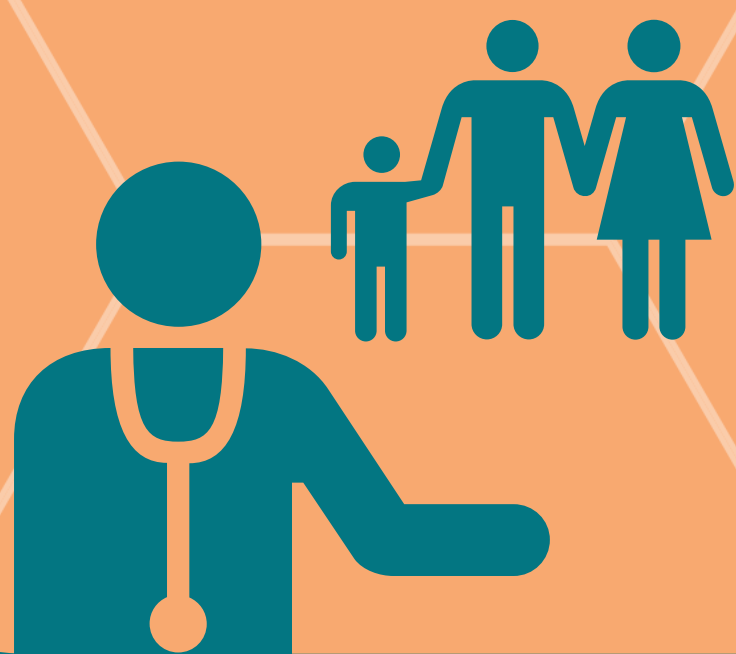
Within a 2011-2013 study of Medicaid data surrounding child health and healthcare use...



 56% of children had a complex chronic condition

 40% possessed mental/behavioral issues

 32% of the sample was technology dependent



Children in concurrent hospice care are very medically complex, and receive care in a complicated health care system.

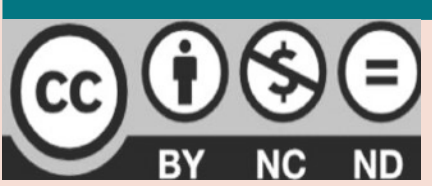
Learn more at

 <https://www.facebook.com/pedeolcare>

 <https://www.twitter.com/PedeoIC>



<https://www.pedeolcare.utk.edu>



Creative Commons License

Research reported in this publication was supported by the National Institute of Nursing Research of the National Institutes of Health under award number R01NR017848 (PI: Lindley). The content is solely the responsibility of the authors and does not necessarily represent the official views of the National Institutes of Health