

# EXAMINATION OF HEALTH CARE SERVICES RECEIVED DURING CONCURRENT CARE



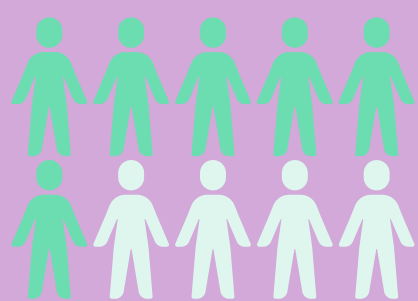
Lindley, L.C., Ssynarenko, R., Mooney-Doyle, K., Mendola, A., Newmann, W., & Keim Malpass, J. Patterns of health care services during pediatric concurrent hospice care: A national study. *American Journal of Hospice & Palliative Medicine*

## Researchers sought to examine...

- ➔ The prevalence of healthcare services
- ➔ The unique clusters of healthcare services
- ➔ The characteristics of the children within these clusters

## Researchers concluded that...

- ➔ Three clusters could be identified low, moderate, and high intensity use of healthcare services



A total of 60% of the sample belonged to the low intensity group



Roughly 35% of the high intensity group was predominately 1 to 5 years

## Find us on social media



<https://www.twitter.com/PedeolC>



<https://www.facebook.com/pedeolcare>

Connect with us at  
<https://www.pedeolcare.utk.edu>



Creative Commons License

Research reported in this publication was supported by the National Institute of Nursing Research of the National Institutes of Health under award number R01NR017848 (PI: Lindley). The content is solely the responsibility of the authors and does not necessarily represent the official views of the National Institutes of Health